

## Toyota Hilux (Vigo) Double Cab KUN25 (T060) Fitting Instructions

1. Remove front grill, bumper and wings.



2. Drill and bolt bonnet hinge with M6 bolt supplied in kit and remove existing hinge bolts.



3. Hammer under wing flange flat and remove door hinge bolt.



4. Loosely fit left hand front leg and place rear hoop in position, align both parts using spacers and PU bushes provided. Drill through lower 4 holes in front leg to pierce inner wing and loosely bolt up.



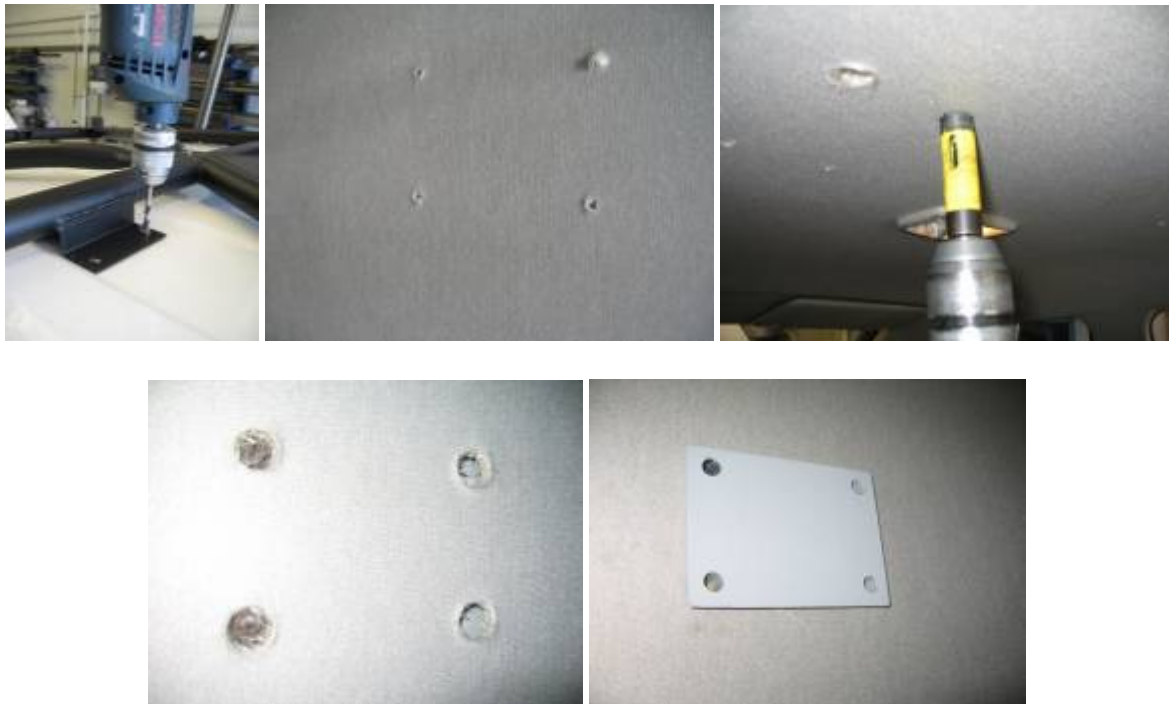
5. Assemble top rail and cross rail and fit to left hand leg on top of vehicle. **It is important that sealant is applied to all of the area around the roof mounting holes to ensure they are watertight.**



6. Fit Right hand front leg and ensure that cage is central on vehicle.



7. Using roof plate as guide drill carefully through roof ( $\varnothing 10\text{mm}$ ) and headlining ( $\varnothing 16\text{mm}$ ) each side and press spacer plate into headlining.



8. Remove seats and carpets from cab; locate internal hoop using roof and seatbelt strap bolts and left hand foot plate datum hole.



9. Drill footplate holes and loosely bolt feet into position. Mark and drill the vehicle sill from below the vehicle.



10. Loosely bolt internal hoop foot plate in place using bolts and spacers provided.



11. Push bottom of external hoop forwards towards rear bulkhead and mark positions of holes on floor.



12. Remove hoop and drill marked holes.



13. Replace hoop and loosely bolt in position using bolts, bushes and spacers provided.



14. Bolt backstays to hoop and position on waist rail. Mark mounting holes remove bar, drill and refit using bolts provided.



15. Refit carpet removing sound deadening material from rear tunnel section, internal trim but not seats.



16. Align V Brace with internal hoop and bolt into place using dowel bolts provided.



17. Using foot plates as guide drill carefully through carpet and floor and bolt loosely into position.



18. Tighten all bolts starting at the front of the vehicle and working towards the rear and refit seats.

19. Cut out corners of front wings to allow clearance around front legs using pattern provided and cover cut edge with rubber trim provided.

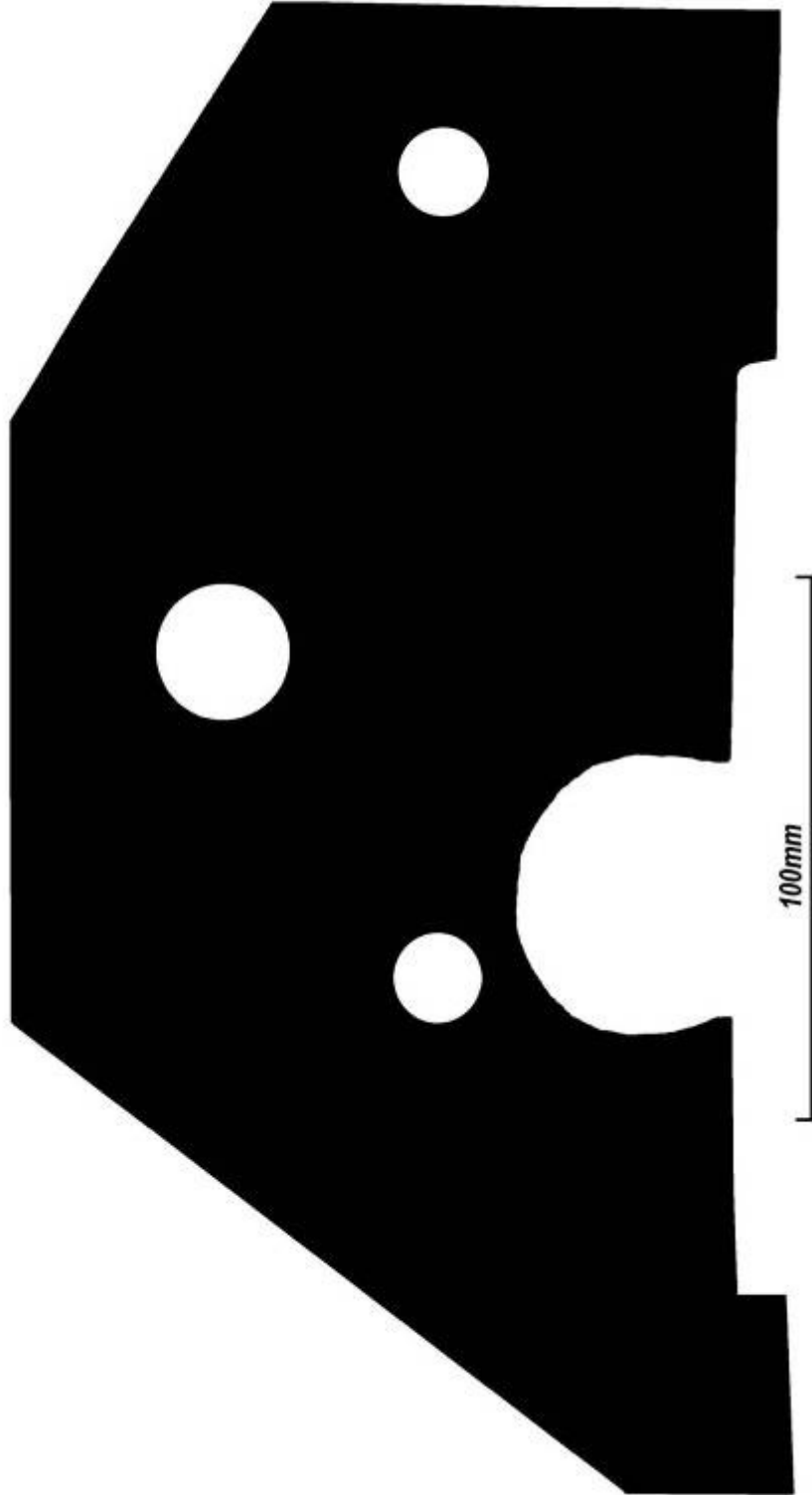


20. Refit both front wings and bumper.



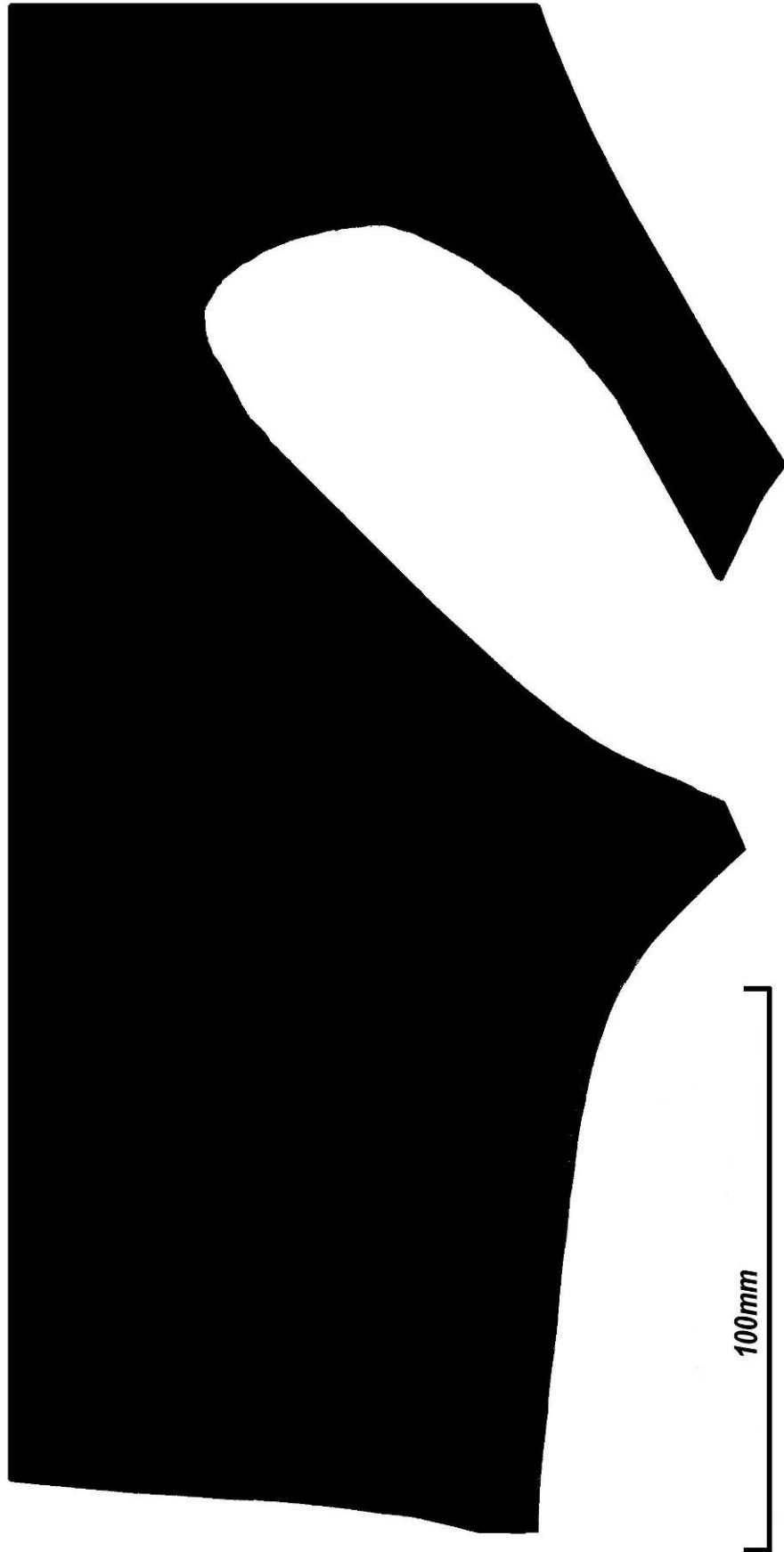
Your Safety Devices International roll cage is now installed.

*T044 B Hoop Trim Cut Out Template*





*T044 Wing Cut Out Template*



100mm

